

# SEASQUIRTS

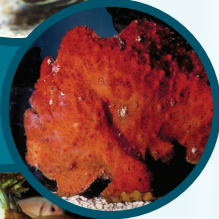
## How do these fish find their food?

Match the fish to its eating habit!



..... Zebra (a)  
Moray Eel

(1) Scrapes food from rocks with strong front teeth.



..... Frogfish (b)

(2) Spits water at insects to knock them out of trees.



..... Bearded (c)  
Armorhead

(3) Uses whisker-like barbels to find food.



..... Dragon (d)  
Moray Eel

(4) Slurps up small shrimps with a long snout.



..... Archerfish (e)

(5) Uses a lure to attract small fish.



..... Goatfish (f)

(6) Catches slippery fish with its sharp pointed teeth.



..... Seahorse (g)

(7) Crushes prey with flattened teeth.



..... Stripebelly (h)  
Pufferfish

(8) Uses its whiskers to find brittlestars to eat.

Come and watch these residents of the Waikīkī Aquarium eat their lunch!